



UPPSALA
UNIVERSITET

U4 WORKSHOP "RESEARCH DATA LIFE CYCLE", 3-4 FEBRUARY 2016, GÖTTINGEN

Research data and DiVA at Uppsala University

urban.ericsson@ub.uu.se



UPPSALA
UNIVERSITET

Outline

- Uppsala University in brief
- Open Access and research data some guiding national principles
- About DiVA - Academic Archive Online, is a publishing system/repository for research publications and student theses and a digital archive for long-term preservation of publications.
- DiVA and research data



UPPSALA
UNIVERSITET

Uppsala University in brief

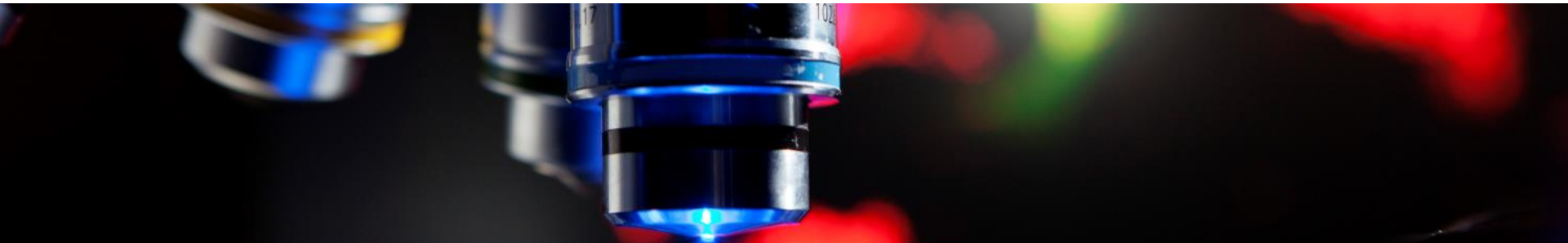
- Three disciplinary domains:
 - humanities and social sciences
 - medicine and pharmacy
 - science and technology
- Nine faculties – 60 departments
- Revenue – SEK 6.3 bn
- 45,000 students, 25,000 full-time equivalents
- 6,800 employees



UPPSALA
UNIVERSITET

Research in figures

- 2,500 doctoral students – 45% women
- 300 doctorates every year
- 4,600 academic publications per year
- 560 professors – 25% women





UPPSALA
UNIVERSITET



UPPSALA
UNIVERSITET

ADMISSIONS

RESEARCH

COLLABORATION

THE UNIVERSITY

Students | Alumni | Library

Uppsala University / The University / Mission & Core Values

Denna sida på Svenska Listen

Faculties & Departments

Structure & Governance

World-leading research

education

excellence and benefiting society

MISSION AND CORE VALUES

[Download the full document](#) or [order a printed copy](#)

Objective

The university will strengthen its position as a leading international research university.

Strategies

- The breadth and diversity of research will be maintained and developed.
- The allocation of research funding between and within scientific disciplines and faculties will be based on evaluations of quality and productivity.
- New and strategically important areas of research will be given special support for rapid establishment.
- The application of sound research practices and ethical research principles is an absolute prerequisite and will be secured through continual educational and informational efforts.
- Dynamic research environments with shared infrastructure will be fostered to support excellent research and facilitate innovative cooperation.
- Cross-disciplinary research cooperation within the University and with external partners will be supported and structural barriers to cooperation will be removed.
- All research will be thoroughly scrutinized in order to strengthen quality and add new aspects. Research results will be published via the most prominent channels in the respective subject areas.
- Research results will be made available in open access channels, wherever possible.
- Cooperation with national and international research funding agencies and organisations will be reinforced and academic staff will be encouraged to take on duties in such organisations.
- External research funding will be increased by giving organisational support for the design of broad and cross-disciplinary research initiatives.

Research results will be made available in open access channels, wherever possible.



UPPSALA
UNIVERSITET

National guidelines - Open Access in Sweden



UPPSALA
UNIVERSITET

Today's OA policy from the Swedish Research Council

- Publications
 - All financed projects from 2010-
 - Articles and Conference papers
 - Open Access within 6 to 2 months (hum/sam)
 - From 2015 only OA articles are accepted
 - From 2017 all publications should have a CC-BY-licens
- Research data – data publishing plan
 - All project applications from 2012-
 - Requirements for a "data management plan" for research data for those projects where data collecting is a major part of the project.
 - Research data should "within reasonable time" be published OA



UPPSALA
UNIVERSITET

Initiative from the EU-commission

- Summer 2012:
 - Decision: OA-publishing will be the norm in Horizon 2020 (EU Research and Innovation programme)
 - Member nations were encouraged to apply national strategies for Open Access
- ➔ In Sweden the Swedish Research Council was assigned to establish national guidelines for OA





UPPSALA
UNIVERSITET

National Guidelines

- January 2015: Proposal from Swedish Research Council

” Scientific publications and artistic works and research data connected to scientific publications resulting from publicly funded research should be openly available”

The Research Council propose:

- Sweden should aim to publish everything OA by 2025
- Detailed guidelines should be decided 2020
- Some issues should be investigated more in detail until 2018



UPPSALA
UNIVERSITET

National Guidelines

For **research data** the Research Council propose...

- Objective = Research data should be published OA as soon as possible
- Finance pilot studies 2015-2020
 - **Purpose** = to support planning and building the technical infrastructure at the universities
 - Except supporting infrastructure there will be needs for other expertise – unclear who is responsible of this...



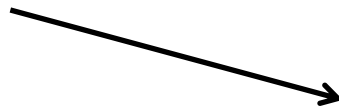


UPPSALA
UNIVERSITET

About us

- Electronic Publishing Centre (EPC) has existed since 2000 and is part of Uppsala University Library

We are located in
Carolina Rediviva





UPPSALA
UNIVERSITET

About us

- What we do?
 - Development of DiVA
 - Support on publishing issues
 - Handle the entire publication process for books and doctoral theses and give advice in graphic design
 - support increased open access publishing at Uppsala University



UPPSALA
UNIVERSITET

About DiVA

- Started in 2000
 - Developed at Uppsala University Library
 - Initial purpose was to publish doctoral theses in full text
- A completely new version in 2008
 - Combined system for full texts and bibliographic references (evaluation/bibliometrics)
 - Registering all kind of publications produced by researchers, teachers and students
- Built mainly on open source software





UPPSALA
UNIVERSITET

DiVA

40 Universities, Research Institutes and Museums

Blekinge Institute of Technology
 Dalarna University
 Ersta Sköndal University College
 Swedish National Defence College
 The Swedish School of Sport and Health Sciences
 The Swedish Agency for Marine and Water Management
 Höskolan i Borås
 Halmstad University
 Stockholm School of Economics
 University of Gävle
 University of Skövde
 Kristianstad University
 University West
 Jönköping University
 Karlstad University
 The Royal Institute of Art
 Royal College of Music
 University College of Arts, Crafts and Design
 Royal Institute of Technology
 Linköping University
 Linnaeus University
 Luleå University of Technology
 Mälardalen University
 Mid Sweden University
 The Nordic Africa Institute
 Nationalmuseum
 Swedish Environmental Protection Agency
 Nordic Council of Ministers

Swedish Museum of Natural History
 The Norwegian University of Science and Technology
 Örebro University
 Swedish Polar Research Secretariat
 RISE/Research Institutes of Sweden
 Red Cross University College
 Södertörn University
 Sophiahemmet University College
 Swedish Meteorological and Hydrological Institute
 Stockholm University
 Umeå University
 Stockholm University of the Arts
 Uppsala University
 The Swedish National Road and Transport Research Institute

DiVA portal: www.diva-portal.org

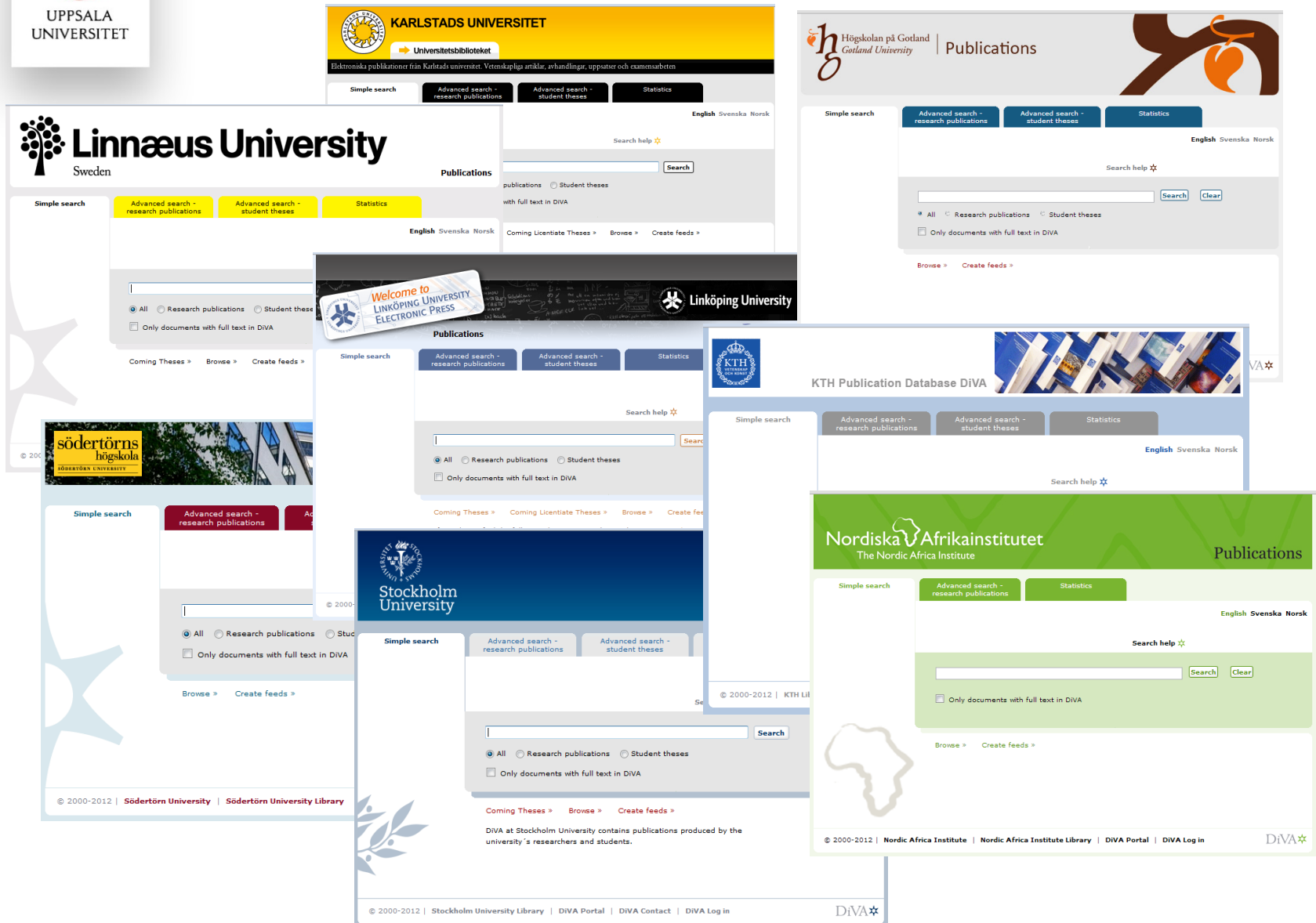
800 000 references - 240 000 in full text

DiVA Members

- Use the same system
- All members contribute to system development
- Joint funding through fees
- Layout and some functionality can be adapted locally



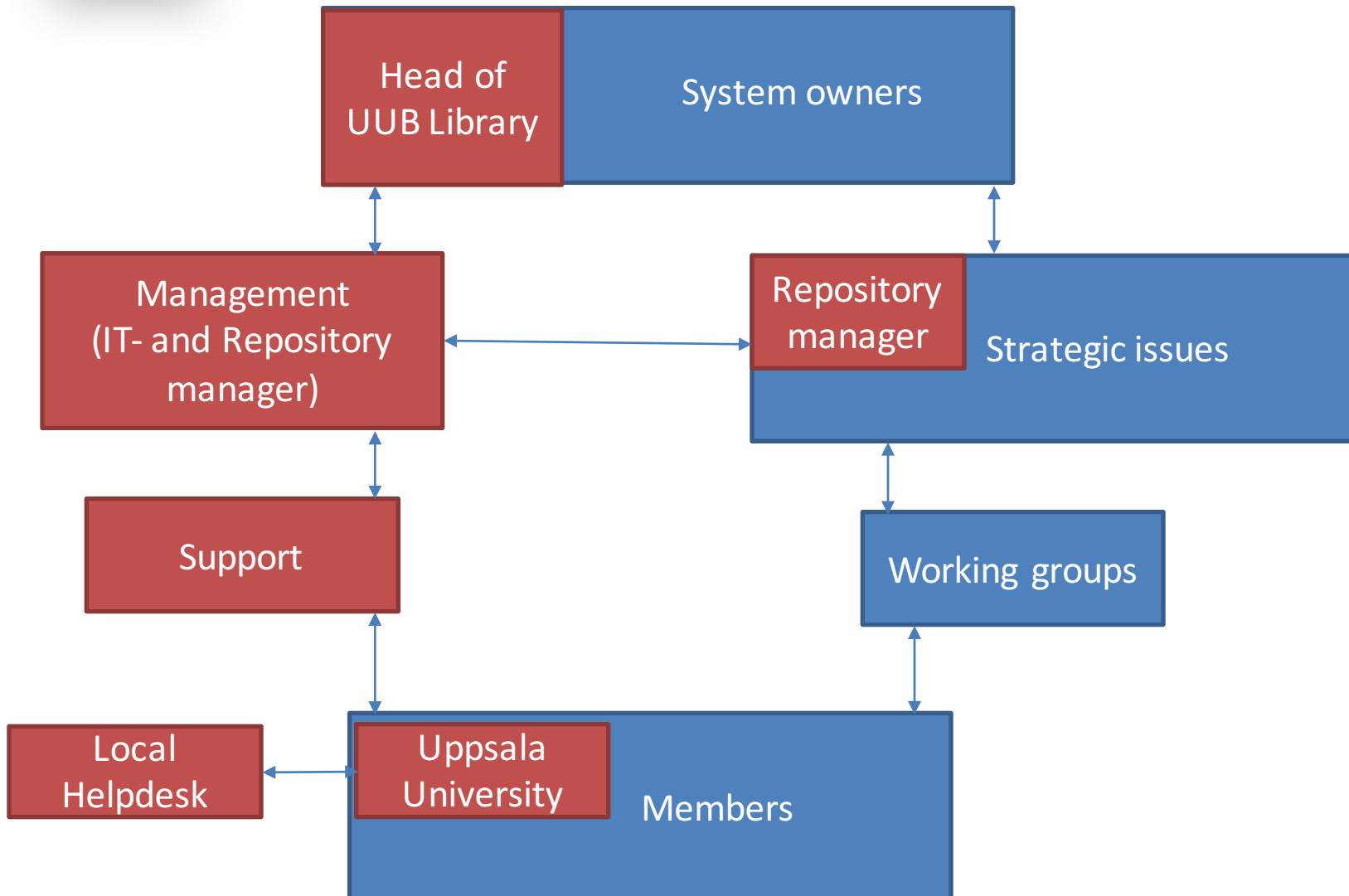
Common layout – but different colours and logos



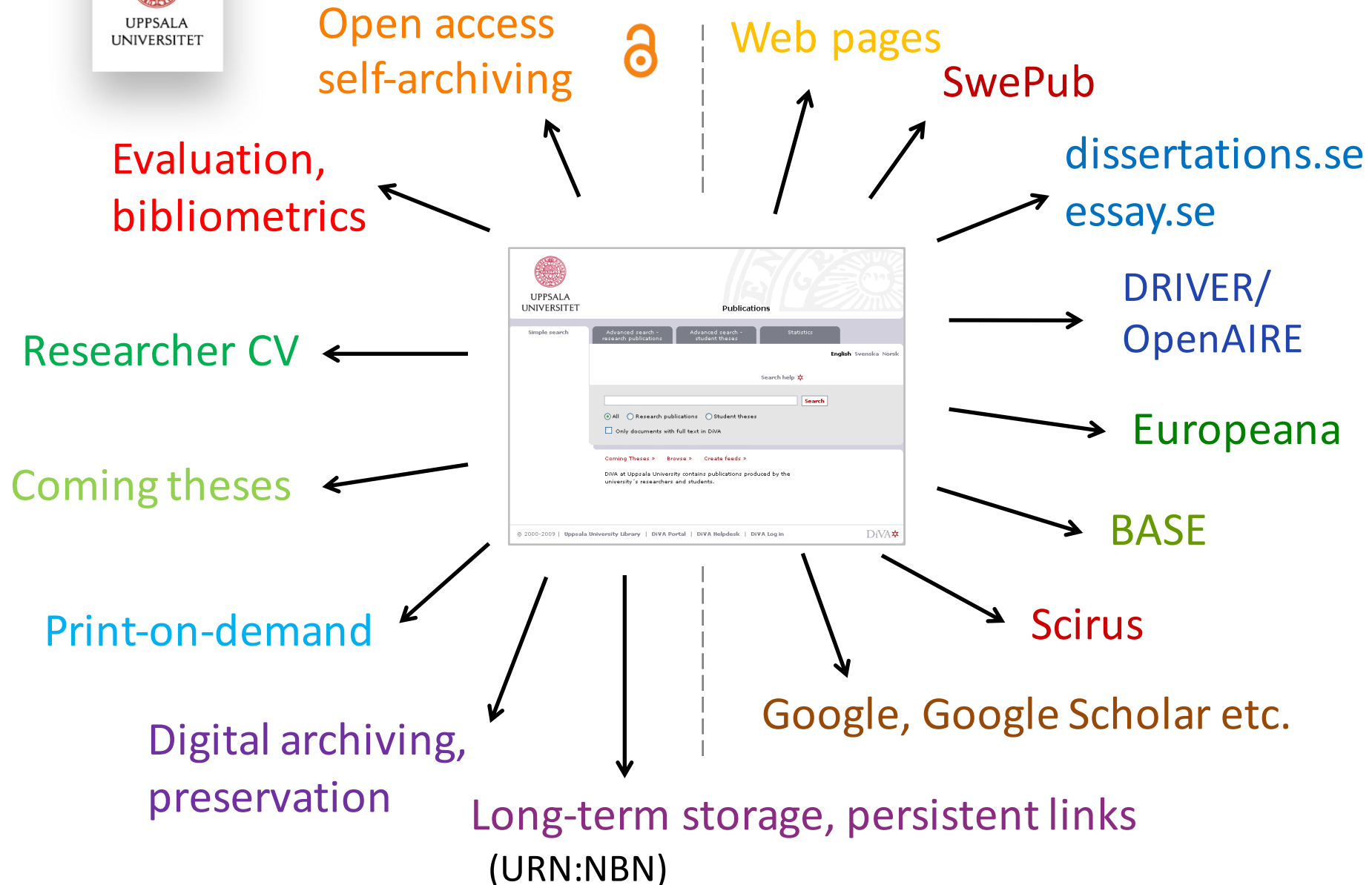


UPPSALA
UNIVERSITET

DiVA - Collaboration model



How DiVA is used



UPPSALA
UNIVERSITET

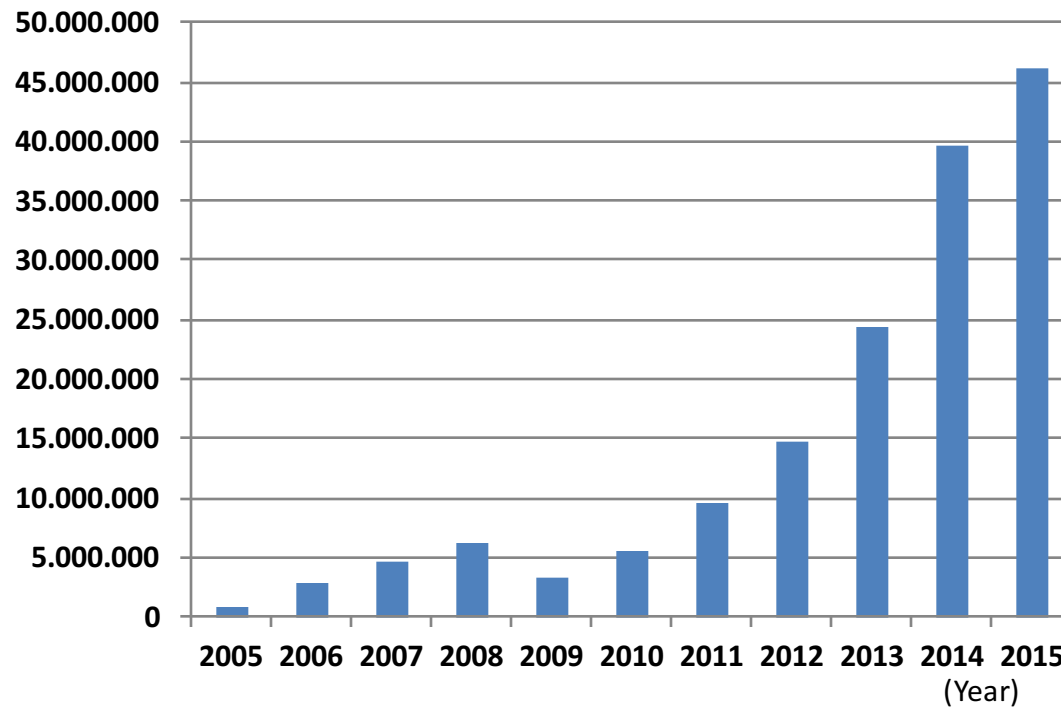


UPPSALA
UNIVERSITET

DiVA statistics

(Millions)

Downloaded full texts



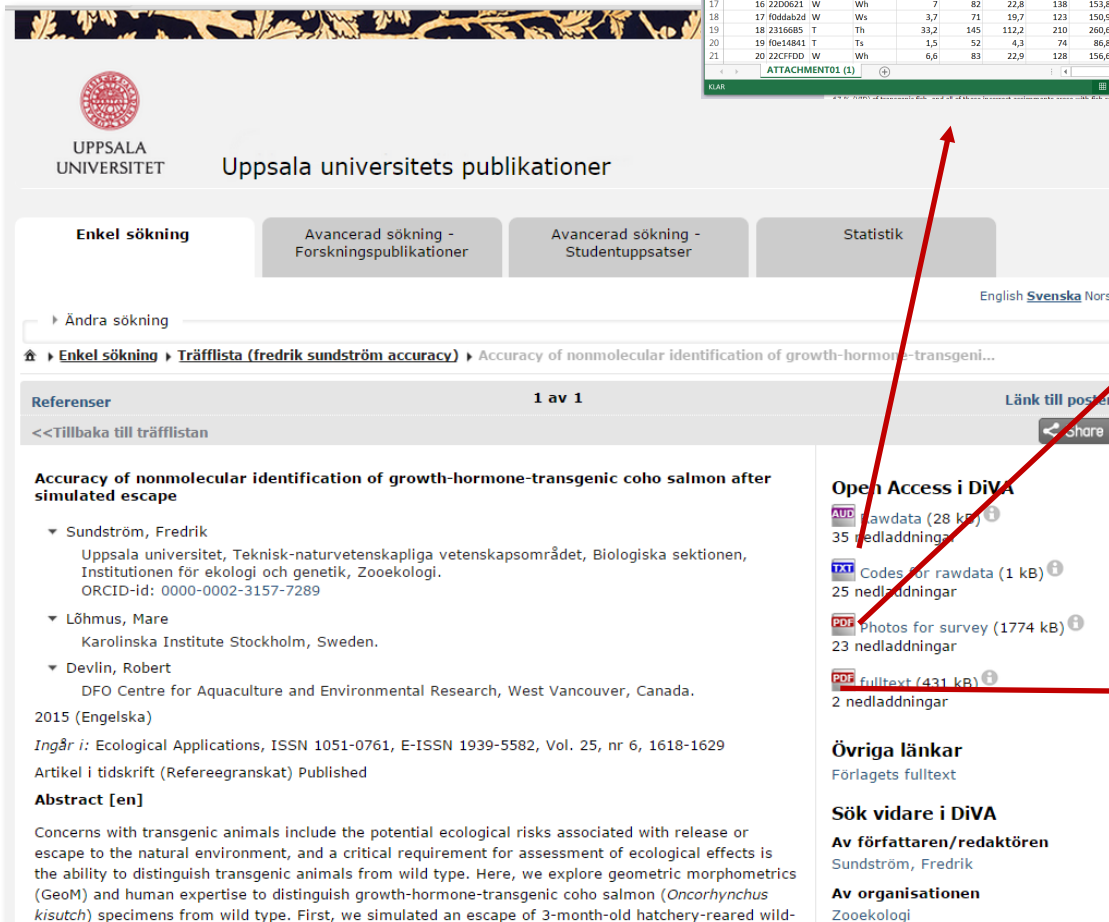


UPPSALA
UNIVERSITET

Research data - What does it mean for university libraries and DiVA?

- Different opinions/policies between universities (DiVA members)
 - Is research data something that libraries should deal with?
- Is likely to include several organizational parts of the university
- Researchers need to meet the demands of the funder asking us about uploading research data to DiVA
- Some journals demand a link to published research data
- Report (2014) about the need for storage of research data at Uppsala university

ATTACHMENT01 (1) - Excel																	
APPLY		START	INFOGA	SIDELAYOUT	FORMLER	DATA	GRANSKA	VISA	ACROBAT	Svensson Anna							
Klistra in		Calibri		11		A		A		A		A		A		A	
Utsnitt		F K U		A		A		A		A		A		A		A	
Teden		Justering		Tol		Format		Celler		Redigering							
Survey_ID																	
A1	B	C	D	E	F	G	H	I	J	K	L	M	N	O	P	Q	R
1	Survey_ID	Fish_ID	Genotype	Fish_type	W1	L1	F2	G2	L2	H1	I1	J1	K1	L1	M1	N1	O1
2	1	3x86552	W	Wh		15.2	114	136.4	1.126	0.3	2.815	1.838	0.043	2.293	1.8	2.4	2.4
3	2	2340988	W	Wh		18	125	135	1.616	0.3	8.535	4.298	0.033	4.298	0.8	1.8	1.8
4	3	W250	W	Wm		205	50	265.9	3.064	0.984	3.846	4.298	0.033	4.298	0.8	1.8	1.8
5	4	10e13f28	T	Wh	13.9	106	47	164	204.1	7.286	0.476	0.565	0.033	0.565	0.8	1.8	1.8
6	5	4f0e125c	T	Wh	6.8	86	19.2	124	147.7	5.516	0.572	0.364	0.033	0.364	0.8	1.8	1.8
7	6	4f0d909c	W	Wh	3.1	63	10.2	96	115.5	5.496	0.188	0.623	0.033	0.623	0.8	1.8	1.8
8	7	W254	W	Wm		204	254	320.8	2.676	0.345	0.476	0.033	0.476	0.8	1.8	1.8	1.8
9	8	8f0dd1048	T	Wh	3	67	14.7	112	137.3	2.576	0.274	0.631	0.033	0.631	0.8	1.8	1.8
10	9	8f0dd2a0c	T	Wh	3.9	67	12	105	126.7	1.256	0.185	0.346	0.033	0.346	0.8	1.8	1.8
11	10	8f0dd32d4	W	Wh	10	96	20.2	124	149.8	4.746	0.187	0.104	0.033	0.104	0.8	1.8	1.8
12	11	8f0e14953	T	Wh	6.9	85	18.9	124	152.4	6.416	0.144	0.269	0.033	0.269	0.8	1.8	1.8
13	12	W244	W	Wm		244	244	316.4	5.576	0.107	0.594	0.033	0.594	0.8	1.8	1.8	1.8
14	13	1181884a	T	Wh	3.9	70	11	105	125.9	0.468	0.796	0.431	0.033	0.431	0.8	1.8	1.8
15	14	10e142e0	T	Wh	22.7	126	63.3	185	297.1	1.256	0.266	0.251	0.033	0.251	0.8	1.8	1.8
16	15	1f0de092a	T	Wh	7.7	89	31.2	148	181.1	3.983	0.756	0.651	0.033	0.651	0.8	1.8	1.8
17	16	2202061	W	Wh	7	82	22.8	138	153.8	2.556	0.576	0.281	0.033	0.281	0.8	1.8	1.8
18	17	1f0d6a62	W	Wh	3.7	71	19.7	123	150.9	2.036	0.746	0.746	0.033	0.746	0.8	1.8	1.8
19	18	2316945	T	Wh	33.2	145	112.7	202	337.7	1.256	0.266	0.251	0.033	0.251	0.8	1.8	1.8
20	19	1f0e14841	T	Wh	1.5	52	43	74	86.8	1.376	0.222	0.354	0.033	0.354	0.8	1.8	1.8
21	20	202cf7f0d															





UPPSALA
UNIVERSITET

Concept

Relations:

IsCitedBy/Cites

IsContinuedBy/Continues

IsNewVersionOf/IsPreviousVersionOf

IsPartOf/HasPart

Research data

Primary data
with relation to:

- Aggregated data
- Aggregated data

Aggregated data
with relation to:

- Publication
- Primary data



UPPSALA
UNIVERSITET

- You should specify whether it is primary data (measurement) or aggregated / processed data
- You should link between those different kinds of research data
- New roles need to be selectable (“data producer”) in DiVA
- When publishing research data there should always be a link to a full text/data set