

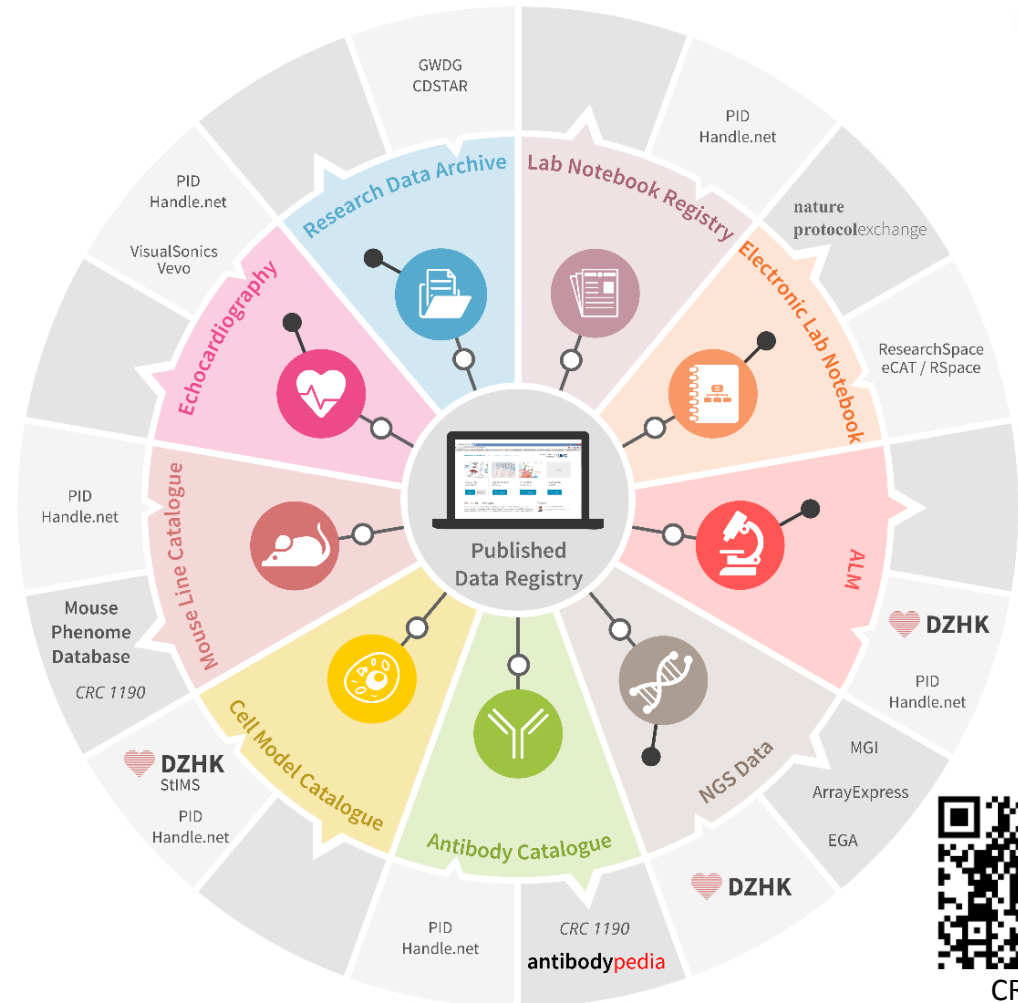
Electronic laboratory note keeping

SFB 1002/1190 INF team

Research Data Platform

CRC 1002

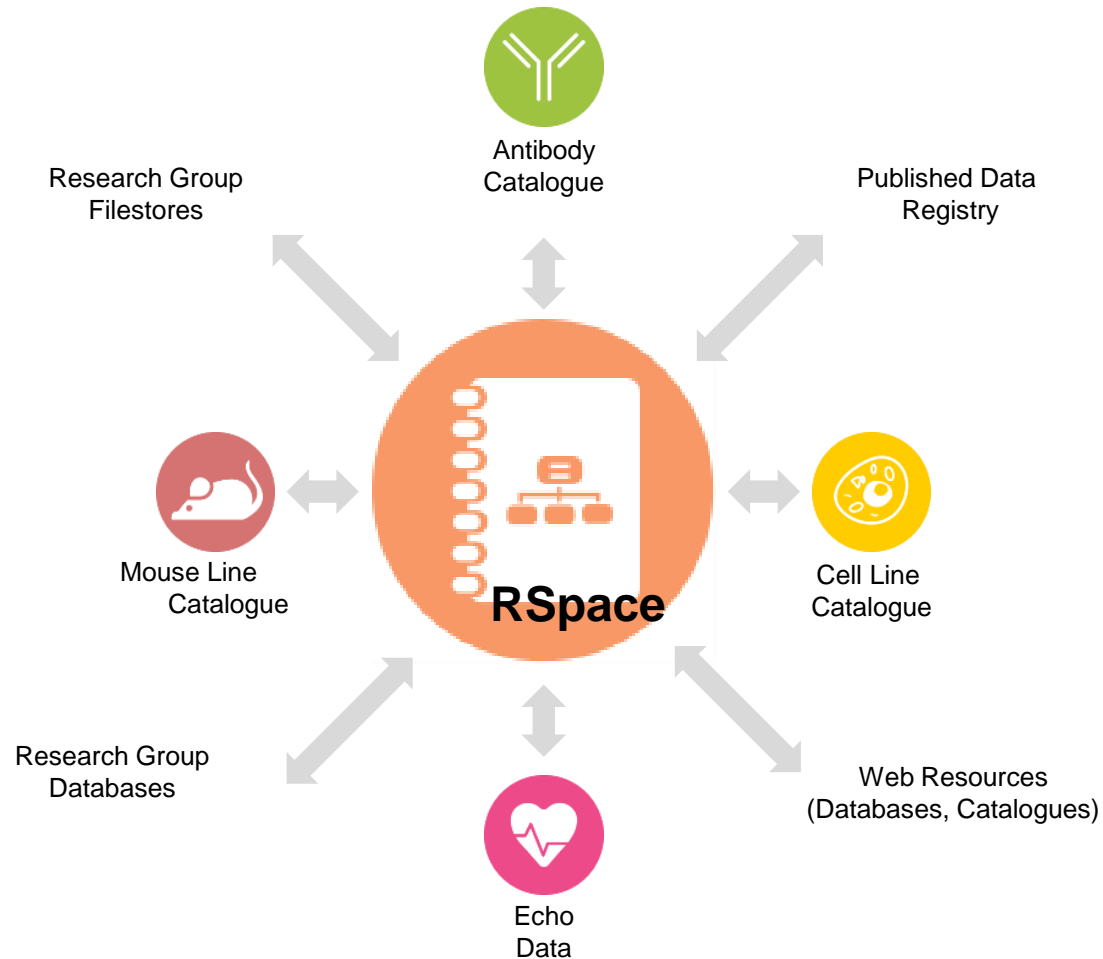
- Collection and interconnection of research data used in publications
- Persistent resolvable access and long-term re-usability of CRC 1002 data
- Data standardization for submission to public repositories
- Data access: Development of Use & Access Policies



CRC 1002
Research Data Platform

ELN organization

Cross-linking data in an ELN



ELN organization

Research group representation CRC 1002/RSpace

CRC 1002 (Scientific Consortium)

Research Group 1

1. Community (optional)
2. PI
3. Lab Manager
4. User (Scientist)



Research Group 2

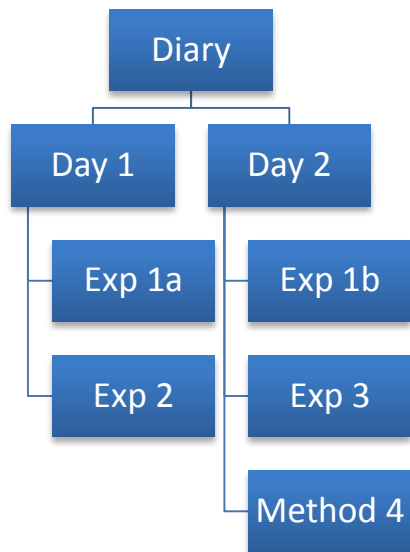
1. Community (optional)
2. PI
3. Lab Manager
4. User (Scientist)



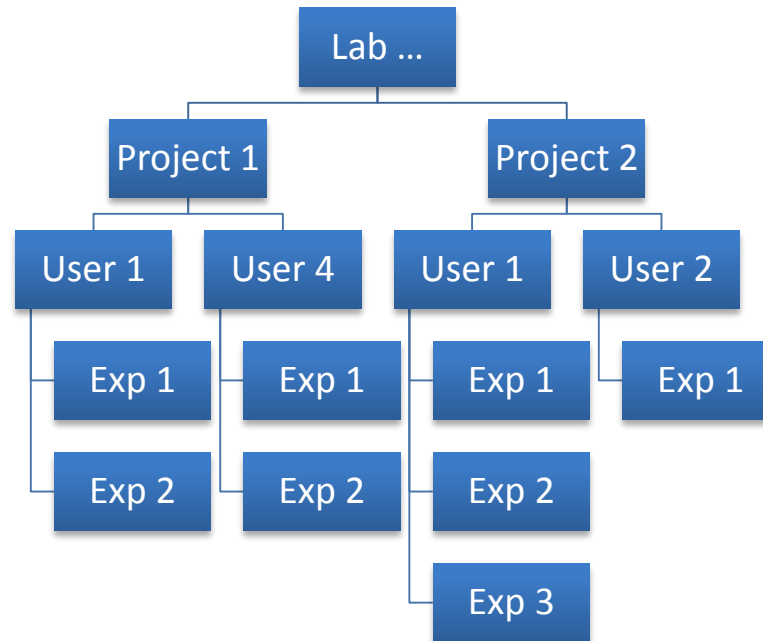
ELN organization

Structuring data in an ELN

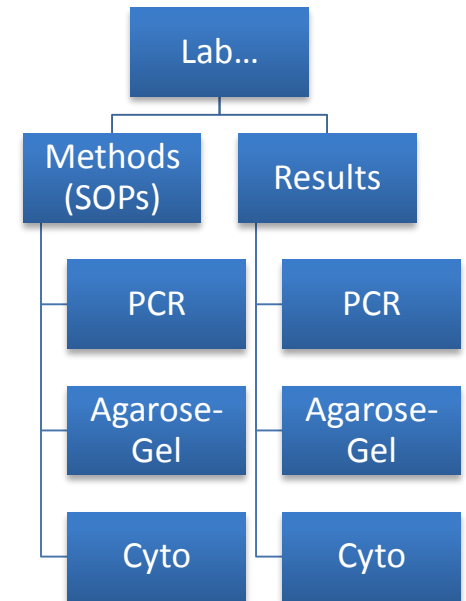
a. Chronologically



b. Project-oriented



c. Method-oriented







RSpace Login



Welcome to RSpace

User 









Password 

[Forgotten your password?](#)

remember me

LOGIN

CREATE ▾ |    |   |    T | All ▾ 
[advanced search ▾](#)

<input type="checkbox"/>	Type	Name	Creation Date	Last Modified	Unique ID	Owner
<input type="checkbox"/>		 harald.kusch	2016-11-18 08:47	2016-11-18 08:47	FL3708	Harald Kusch
<input type="checkbox"/>		 Templates	2016-03-23 14:50	2016-03-23 14:50	FL268	Harald Kusch
<input type="checkbox"/>		 Examples	2016-03-23 14:50	2016-03-23 14:50	FL258	Harald Kusch
<input type="checkbox"/>		 Shared	2016-03-23 14:50	2016-03-23 14:50	FL254	Harald Kusch

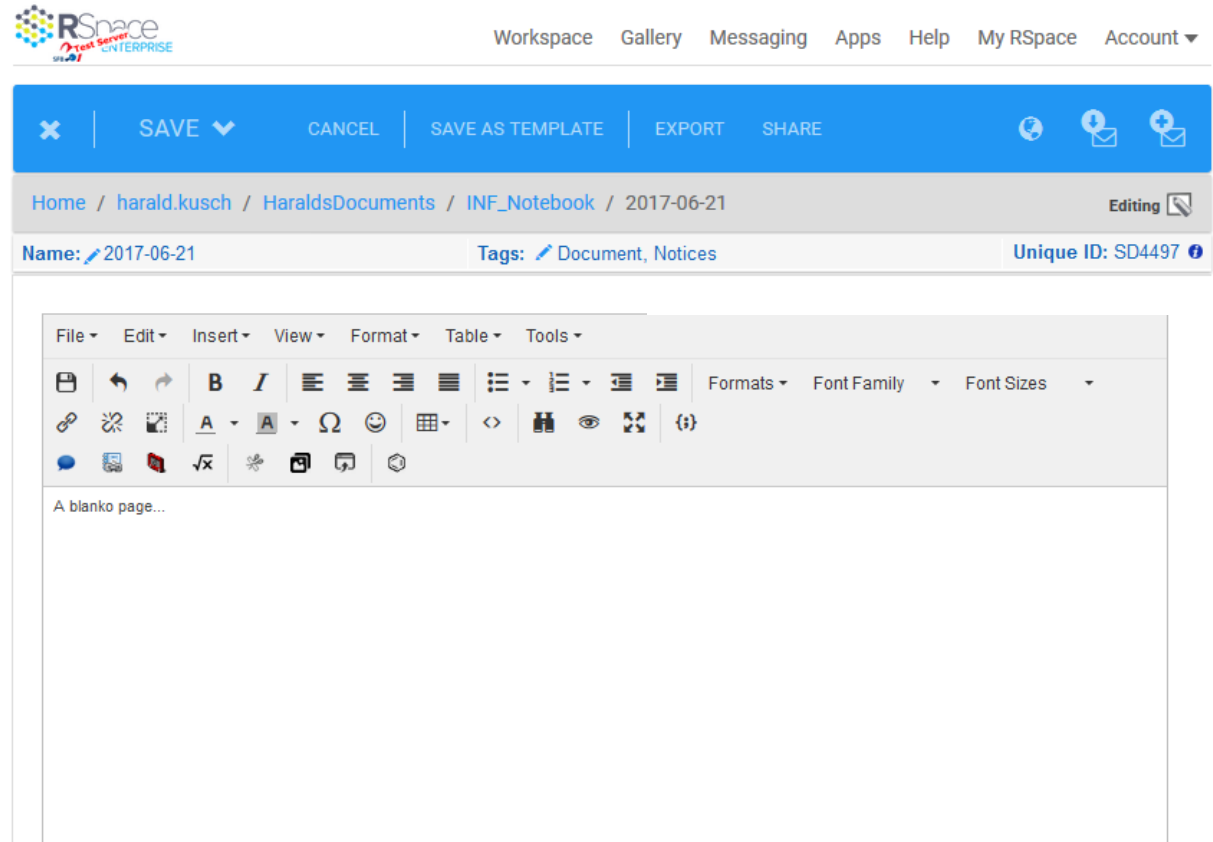
Items per page:

15 ▾

RSpace

Unstructured documentation

- New methods
- Room for “creativity”



The screenshot displays the RSpace web interface. At the top, there is a navigation bar with links for Workspace, Gallery, Messaging, Apps, Help, My RSpace, and Account. Below this is a blue action bar containing buttons for X, SAVE, CANCEL, SAVE AS TEMPLATE, EXPORT, and SHARE. The breadcrumb trail shows the path: Home / harald.kusch / HaraldsDocuments / INF_Notebook / 2017-06-21. The document name is 2017-06-21, and it is tagged as Document, Notices. The unique ID is SD4497. The main editing area features a rich text editor with a menu bar (File, Edit, Insert, View, Format, Table, Tools) and a toolbar with various icons for text formatting, alignment, and insertion. The content area is currently blank, displaying the text "A blanko page...".

RSpace

Structured documentation

- Centralized protocols
- Learning tool
- Quickly shared
- Metadata recording facilitated

Name: Western blot Tags: Unique ID: SD5059

Field ▾
17/01/2017

Samples

Sample cells 1
Sample cells 2
Sample cells 3

Block solution

250 ml: 25 ml 10 X TBS, 12.5 g milk powder

Block solution date

17/01/2017

Primary antibody

GST 1mg/mL, Roth 3998.1

Link to research data platform

<https://sfb1002.med.uni-goettingen.de/production/>

Primary antibody dilution

1:1000

Primary antibody incubation time in min ▾

60 min
 90 min
 overnight
 other

Primary antibody incubation temperature

RT

Secondary antibody

IRDye 800 CW Donkey anti-Rabbit IgG

Secondary antibody supplier

PN 926-32213, LI-COR INC.

Secondary antibody dilution

1:5000

Audit Trail

Audit: My RSpace Activity

You can filter this audit by [Actions](#) and Date Range

Select date range to audit From To

You found 160 hits.

Time	User	Action	Type	Resource	Name
2017-01-13 11:30:39	Evelina De Laurentiis	WRITE	RECORD	SD4629	2017_01_09_13
2017-01-13 11:30:20	Evelina De Laurentiis	READ	RECORD	SD4629	2017_01_09_13
2017-01-13 11:15:52	Evelina De Laurentiis	WRITE	RECORD	SD4629	2017_01_09_13
2017-01-13 11:05:32	Evelina De Laurentiis	READ	RECORD	SD4629	2017_01_09_13
2017-01-12 15:59:26	Evelina De L	Modification Date		Modification Details	Options
2017-01-12 15:58:22	Evelina De L				
2017-01-12 15:41:54	Evelina De L	2017-01-31 14:22:00		RENAME	View Restore
2017-01-12 14:49:25	Evelina De L				
2017-01-12 14:46:58	Evelina De L	2017-01-31 14:22:18		RENAME	View Restore
2017-01-12 14:46:36	Evelina De L				
		2017-01-31 14:25:04		FIELD_CHG-Data	View Restore
		2017-01-31 14:28:39		FIELD_CHG-Data	View Restore

[Show more ...](#)

Easy additional reusable archiving strategies:

Regular Data-Exports

Most similar to paper, partially interactive => PDF-Format

Most similar to ELN (Rspace), interactive => HTML-Format


Interoperability, human and machine readability => XML-Format

Interfaces to repository software (e.g. Dataverse, DSPACE)

ORCID integration



Workspace Gallery Messaging Apps Help My RSpace Account ▾




My Profile - Username: harald.kusch

First Name: Harald

Last Name: Kusch

Optionally, add any information about you or your research.

E-Mail: harald.kusch@med.uni-goettingen.de

ORCID:  <http://orcid.org/0000-0002-9895-2469>

Manage API key

Harald Kusch

ORCID ID

 orcid.org/0000-0002-9895-2469

Country

Germany

Keywords

Forschungsdatenmanagement, e-Science, Digital Medicine, Digital transformation, Biomedical informatics

Websites

[UMG Medizinische Informatik](#)
[CRC 1002 Research Data Platform](#)
[Mendeley profile](#)
[Linked In Profile](#)
[Researchgate Profile](#)
[RDA Profile](#)

Other IDs

ResearcherID: I-5912-2015

▼ Employment (4)

Sort

Universitätsmedizin Göttingen: Göttingen, Niedersachsen, Germany
2014-08 to present

Scientist (Institut für Medizinische Informatik)

Source: Harald Kusch

Created: 2015-05-06

Georg-August-Universität Göttingen: Göttingen, Niedersachsen, Germany
2010-08 to 2014-08

Scientist (Institut für Mikrobiologie und Genetik)

Source: Harald Kusch

Created: 2015-05-06

Ernst-Moritz-Arndt Universität Greifswald: Greifswald, Mecklenburg-Vorpommern, Germany
2005 to 2010

(Institut für Mikrobiologie)

Source: Harald Kusch

Created: 2016-10-27

Julius-Maximilians-Universität Würzburg: Würzburg, Bayern, Germany
2000 to 2004

RSpace Challenges

- Start up phase
Takes some time
- Familiarize
Ideal vs reality

- RSpace Official Page
<http://www.researchspace.com/>
- RSpace Manual
<http://www.researchspace.com/enterprise/help-and-support-resources-enterprise/>
- Free community version
<http://community.researchspace.com/>

INF team



Dr. Sara Nußbeck

(TP INF-Leader IT)

orcid.org/0000-0003-1223-6494



Prof. Dr. Blanche Schwappach

(TP INF-Leader Research)

orcid.org/0000-0003-0225-6432

Georg Aschenbrandt

Luca Freckmann

Christian Henke

Roman Paul



Dr. Evelina De Laurentiis

(PostDoc)

orcid.org/0000-0002-6469-1627



Dr. Harald Kusch

(PostDoc)

orcid.org/0000-0002-9895-2469



Bartłomiej Marzec

(B.Sc. Inf)

orcid.org/0000-0002-9640-8881

Visit <http://www.eresearch.uni-goettingen.de/content/eresearch-toolbox-electronicnote-keeping> for further information.

All icons used were designed using Freepik from and licensed under Creative Commons BY 3.0. www.freepik.com; www.flaticon.com